

Master Plan for Grand Traverse County



Appendix A: Tables and Charts

1980 – 2030 Population and Age for Grand Traverse County and Local Units
1980 – 2040 Grand Traverse County and Surrounding Counties (Six County Region)
2010 Housing Units and Occupancy for Grand Traverse County and Local Units
2010 – 2040 Grand Traverse County Household Projections
2010 Race and Ethnicity for Grand Traverse County and Local Units
2010 Educational Attainment for Grand Traverse County and Local Units
2010 Income for Grand Traverse County and Local Units
1990 – 2012 Grand Traverse County Annual Employment
2010 – 2012 Grand Traverse County Monthly Employment
2010 Employment for Grand Traverse County and Local Units
2010 Travel to Work for Grand Traverse County and Local Units
2006-2010 Top Ten Counties for Commuting to Grand Traverse County
2010 – 2040 Grand Traverse County Industry Projections
2010 Top Seven Counties for Tourism Spending in Michigan
2000 – 2010 Building Permits for Grand Traverse County and Local Units
2010 Land Use/Land Cover for Grand Traverse County and Local Units
Grand Traverse County Agricultural Land, Farms and Sales

1980 - 2030 Population and Age for Grand Traverse County and Local Units



Source: U.S. Census Bureau; Projections: Grand Traverse County Planning & Development Department

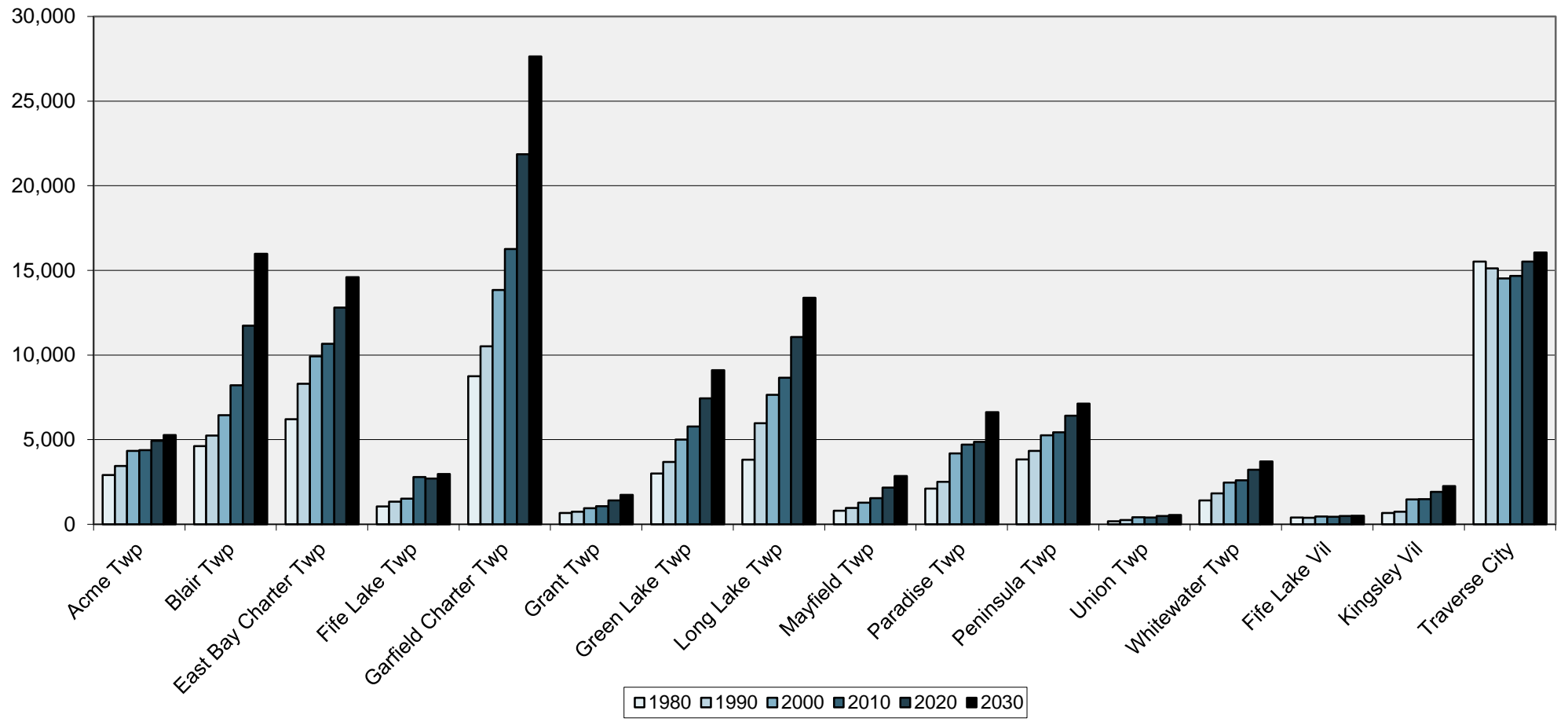
	Count			Projections		2010 Median Age	2010 Percent of Population Under 18 Yrs	2010 Percent of Population Over 65 Yrs				
	1980	1990	2000	2010	2020				2030			
POPULATION AND AGE												
Acme Twp	2,909	3,447	4,332	4,375	4,929	5,280	46.6	21.8	18.7			
Blair Twp	4,613	5,249	6,448	8,209	11,732	15,985	34.2	27.8	8.3			
East Bay Charter Twp	6,212	8,307	9,919	10,663	12,799	14,599	41.1	23.1	11.9			
Fife Lake Twp	1,056	1,344	1,517	2,791	2,709	2,969	38.4	12.3	9.2			
Garfield Charter Twp	8,747	10,516	13,840	16,256	21,861	27,641	43.0	20.1	20.4			
Grant Twp	676	745	947	1,066	1,415	1,744	44.9	22.7	14.5			
Green Lake Twp	2,997	3,677	5,009	5,784	7,441	9,105	39.5	24.2	11.9			
Long Lake Twp	3,823	5,977	7,648	8,662	11,066	13,375	41.4	25.1	11.0			
Mayfield Twp	806	967	1,271	1,550	2,169	2,852	37.7	27.1	11.4			
Paradise Twp	2,117	2,508	4,191	4,713	4,868	6,619	35.5	28.9	9.2			
Peninsula Twp	3,833	4,340	5,265	5,433	6,416	7,126	53.4	18.8	25.9			
Union Twp	185	255	417	405	498	553	45.9	23.5	11.9			
Whitewater Twp	1,409	1,825	2,467	2,597	3,224	3,718	46.1	21.8	14.6			
Fife Lake Vil	402	394	466	443	488	502	41.1	22.8	15.6			
Kingsley Vil	664	738	1,469	1,480	1,924	2,255	32.6	31.4	9.5			
Traverse City	15,516	15,116	14,532	14,674	15,519	16,050	40.8	18.2	16.7			
Grand Traverse County	54,899	64,273	77,655	86,986	106,600	125,244	41.3	22.1	15.0			

1980 - 2030 Population and Age for Grand Traverse County and Local Units



Source: U.S. Census Bureau; Projections: Grand Traverse County Planning & Development Department

1980 - 2030 Population Counts and Projections



1980 - 2040 Grand Traverse County and Surrounding Counties



Source: U.S. Census Bureau; Projections: MDOT-Statewide & Urban Model Travel Analysis Section & University of Michigan Institute for Research on Labor, Employment, and the Economy

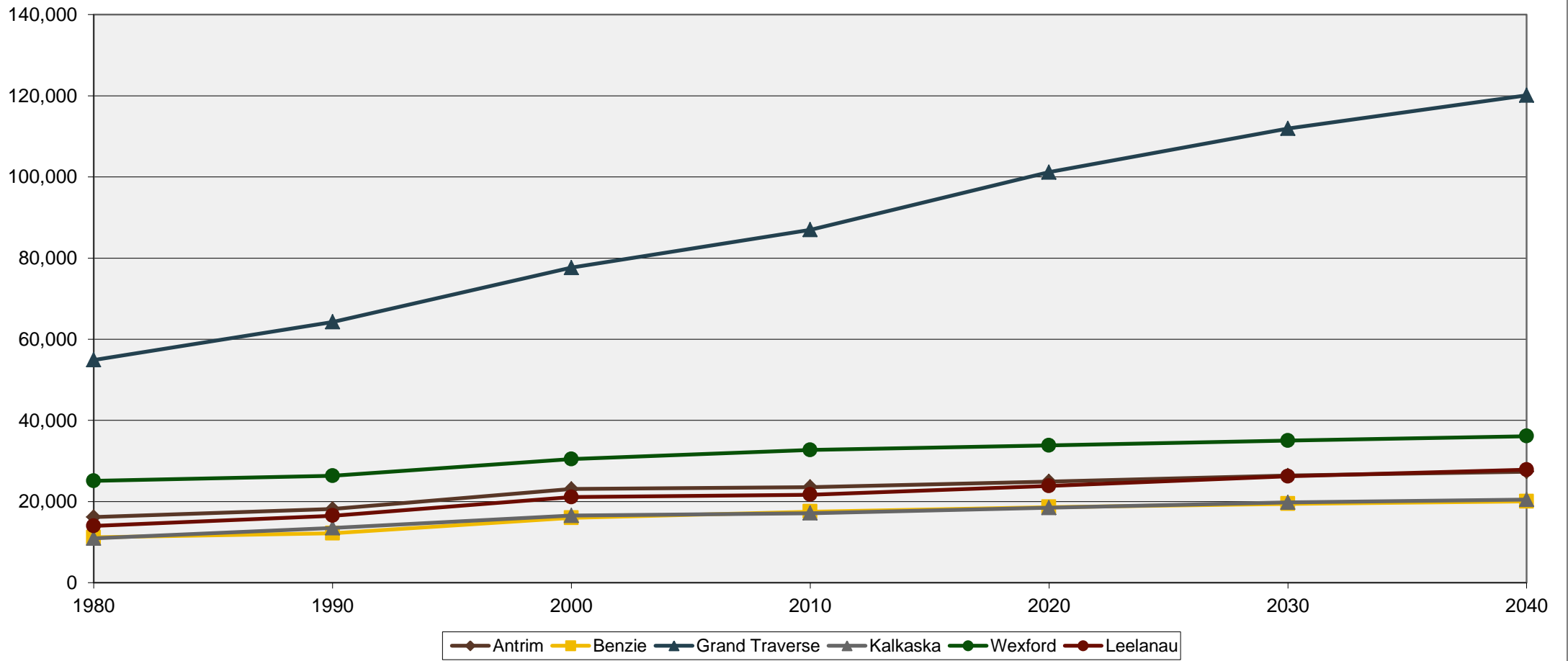
	Counts				Projections			2000-2010 Number Change	2000-2010 Percent Change	2010-2040 Number Change	2010-2040 Percent Change
	1980	1990	2000	2010	2020	2030	2040				
POPULATION											
Antrim	16,194	18,185	23,110	23,580	24,951	26,427	27,387	470	2.0%	3,807	16.1%
Benzie	11,205	12,200	15,998	17,525	18,648	19,460	20,077	1,527	9.5%	2,552	14.6%
Grand Traverse	54,899	64,273	77,654	86,986	101,164	111,925	120,127	9,332	12.0%	33,141	38.1%
Kalkaska	10,952	13,497	16,571	17,153	18,475	19,784	20,507	582	3.5%	3,354	19.6%
Leelanau	14,007	16,527	21,119	21,708	23,848	26,237	27,854	589	2.8%	6,146	28.3%
Wexford	25,102	26,360	30,484	32,735	33,846	35,022	36,117	2,251	7.4%	3,382	10.3%
Six County Region	132,359	151,042	184,936	199,687	220,931	238,854	252,068	14,751	8.0%	52,381	26.2%

1980 - 2040 Grand Traverse County and Surrounding Counties



Source: U.S. Census Bureau; Projections: MDOT-Statewide & Urban Model Travel Analysis Section & University of Michigan Institute for Research on Labor, Employment, and the Economy

1980 - 2040 Grand Traverse County and Surrounding Counties Population



2010 - 2040 Grand Traverse County Household Projections



Source: U.S. Census Bureau; Projections: MDOT-Statewide & Urban Model Travel Analysis Section & University of Michigan Institute for Research on Labor, Employment, and the Economy

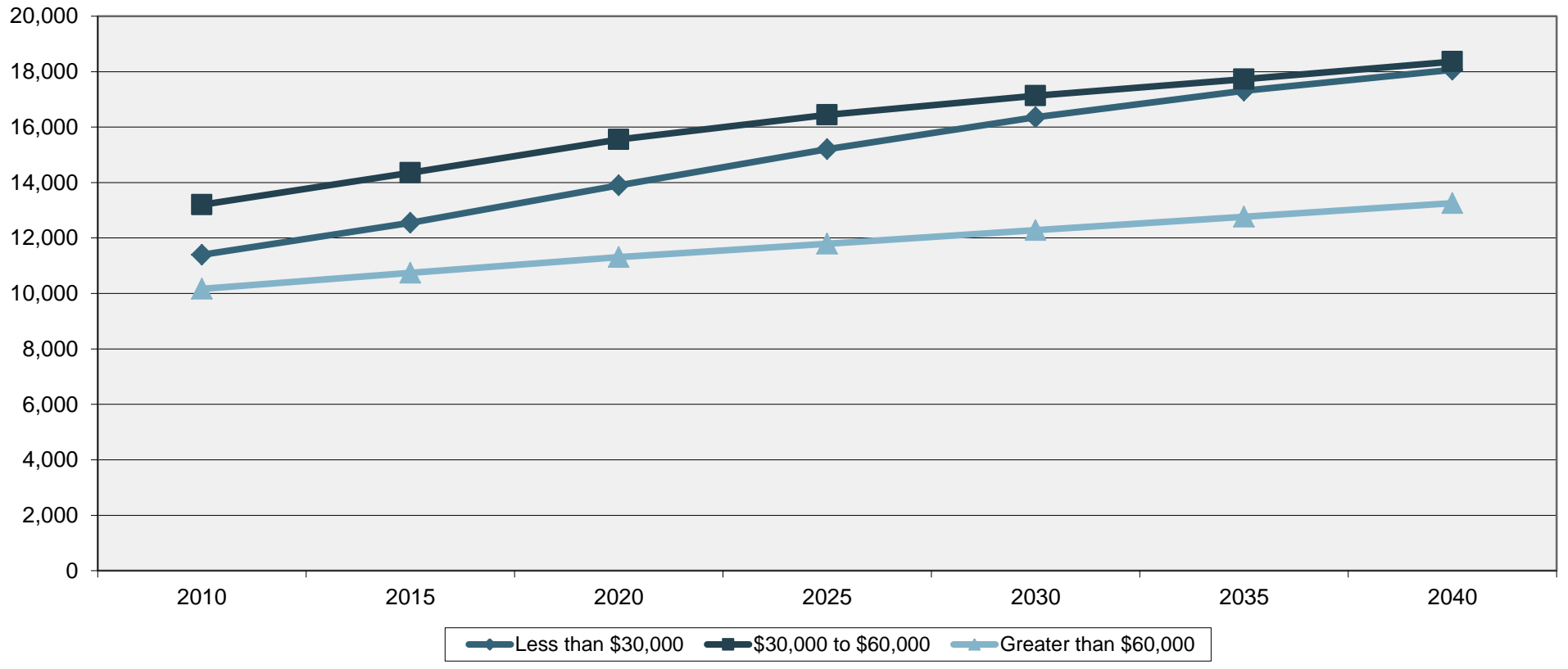
	2010	2015	2020	2025	2030	2035	2040	2010-2040 Number Change	2010-2040 Percent (%) Change
HOUSEHOLDS									
Total Households	34,757	37,646	40,763	43,442	45,769	47,808	49,679	14,921	70.0%
Households by Age Group:									
Aged 18-24	981	973	999	1,051	1,114	1,160	1,222	241	80.3%
Aged 25-34	4,991	5,715	6,131	6,038	5,975	6,175	6,434	1,442	77.6%
Aged 35-44	5,748	6,031	6,919	7,702	7,999	7,789	7,709	1,961	74.6%
Aged 45-54	7,835	7,173	6,669	6,927	7,745	8,512	8,826	991	88.8%
Aged 55-64	7,037	7,996	8,014	7,350	6,794	7,027	7,850	813	89.6%
Aged 65-74	4,208	5,446	7,064	8,064	8,113	7,490	6,976	2,768	60.3%
Aged 75 or more	3,957	4,311	4,966	6,310	8,029	9,655	10,662	6,706	37.1%
Households by Number of Persons:									
1 persons	8,557	9,374	10,342	11,379	12,379	13,243	13,896	5,339	61.6%
2 persons	14,351	15,896	17,279	18,259	19,029	19,828	20,685	6,335	69.4%
3 persons	4,729	4,979	5,264	5,494	5,705	5,888	6,073	1,344	77.9%
4 persons	4,506	4,673	4,975	5,256	5,482	5,605	5,715	1,209	78.8%
5 or more persons	2,615	2,724	2,903	3,054	3,175	3,245	3,310	695	79.0%
Household Income:									
Less than \$30,000	11,392	12,550	13,903	15,202	16,358	17,314	18,066	6,674	63.1%
\$30,000 to \$60,000	13,200	14,355	15,554	16,445	17,131	17,729	18,357	5,157	71.9%
Greater than \$60,000	10,166	10,741	11,306	11,795	12,280	12,766	13,256	3,090	76.7%
Household with Vehicles:									
0 vehicles	1,683	1,835	2,030	2,286	2,574	2,842	3,028	1,346	55.6%
1 vehicle	10,754	11,823	13,064	14,238	15,273	16,127	16,806	6,052	64.0%
2 vehicles	15,710	17,130	18,528	19,472	20,139	20,743	21,460	5,750	73.2%
3 or more vehicles	6,611	6,858	7,141	7,446	7,782	8,096	8,384	1,774	78.8%
Households and Children:									
Without children	24,364	26,802	29,208	31,306	33,177	34,952	36,562	12,199	66.6%
With children	10,394	10,844	11,555	12,136	12,592	12,856	13,116	2,723	79.2%

2010 - 2040 Grand Traverse County Household Projections



Source: U.S. Census Bureau; Projections: MDOT-Statewide & Urban Model Travel Analysis Section & University of Michigan Institute for Research on Labor, Employment, and the Economy

2010 - 2040 Household Income Projections

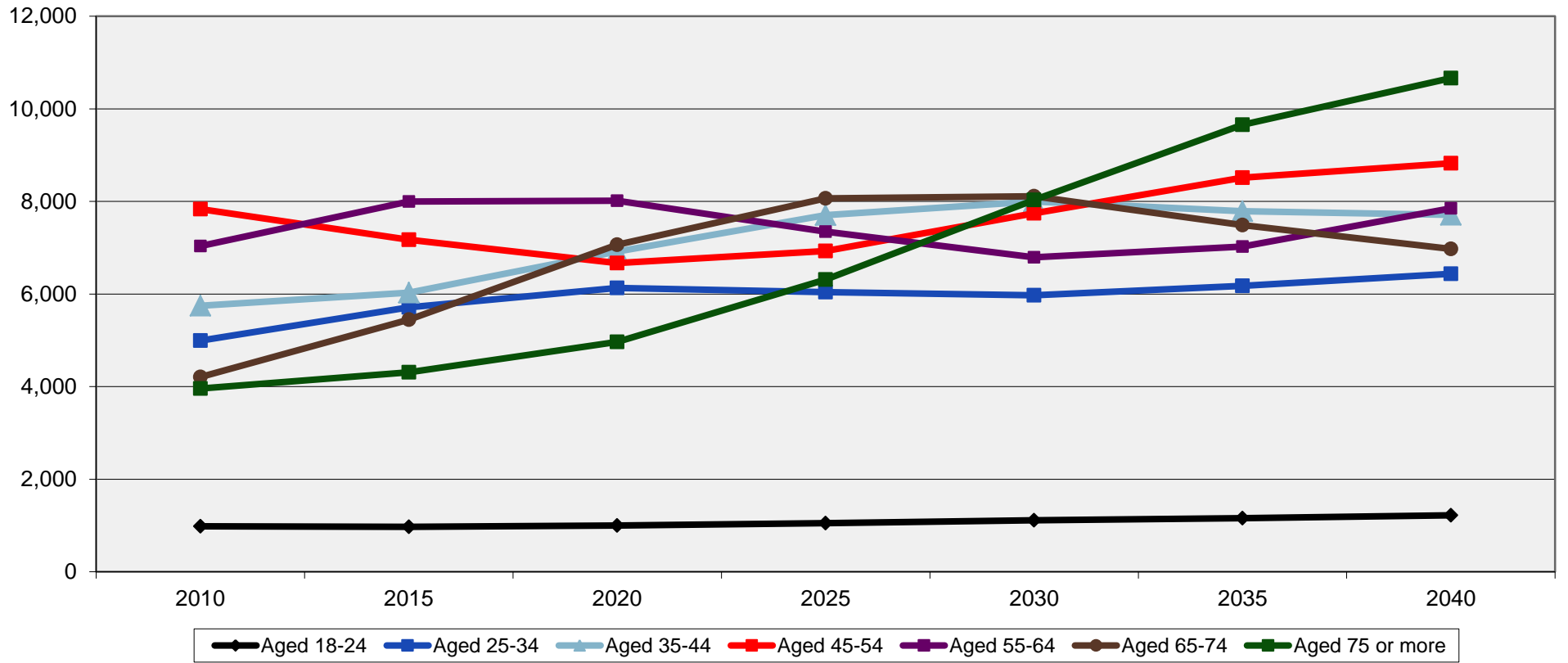


2010 - 2040 Grand Traverse County Household Projections



Source: U.S. Census Bureau; Projections: MDOT-Statewide & Urban Model Travel Analysis Section & University of Michigan Institute for Research on Labor, Employment, and the Economy

2010 - 2040 Household Age Projections



2010 Race and Ethnicity for Grand Traverse County and Local Units



Source: U.S. Census Bureau. *Hispanic or Latino refers to a person of Cuban, Mexican, Puerto Rican, South or Central American, or other Spanish culture or origin regardless of race. People who identify their origin as Hispanic or Latino Origin may be any race.

RACE AND ETHNICITY	Percent (%)							Percent (%)				
	White	African-American	Alaska Native or Native American	Asian	Hawaiian or Other Pacific Islander	Some Other Race	Two or More Races	Hispanic or Latino Origin*				
Acme Twp	96.3	0.3	0.8	0.6	0.0	0.4	1.7	1.5				
Blair Twp	93.1	0.4	1.9	1.0	0.1	1.2	2.4	3.5				
East Bay Charter Twp	96.1	0.3	1.0	0.7	0.0	0.4	1.5	1.6				
Fife Lake Twp	74.2	23.0	1.2	0.4	0.0	0.0	1.1	3.4				
Garfield Charter Twp	93.9	0.8	1.2	1.1	0.0	0.7	2.4	2.5				
Grant Twp	98.1	0.1	0.4	0.1	0.0	0.2	1.1	1.1				
Green Lake Twp	96.4	0.3	1.2	0.6	0.1	0.2	1.7	1.8				
Long Lake Twp	96.7	0.2	0.9	0.5	0.0	0.5	1.3	2.0				
Mayfield Twp	97.9	0.3	0.3	0.3	0.2	0.0	1.0	0.4				
Paradise Twp	96.8	0.7	0.7	0.1	0.1	0.1	1.4	2.3				
Peninsula Twp	96.7	0.1	0.4	0.9	0.0	1.2	0.7	2.3				
Union Twp	97.5	0.0	1.0	0.5	0.3	0.0	0.7	1.7				
Whitewater Twp	96.5	0.2	0.9	0.5	0.0	0.7	1.2	1.6				
Fife Lake Vil	95.7	0.7	1.6	0.0	0.0	0.0	2.0	1.8				
Kingsley Vil	95.6	0.7	1.1	0.1	0.2	0.1	2.2	2.4				
Traverse City	94.4	0.7	1.8	0.7	0.0	0.5	1.9	1.9				
Grand Traverse County	94.7	1.2	1.2	0.7	0.5	0.6	1.7	2.2				
Michigan	78.9	14.2	0.6	2.4	0.0	1.5	2.3	4.4				

2010 Educational Attainment for Grand Traverse County and Local Units



Source: U.S. Census Bureau.

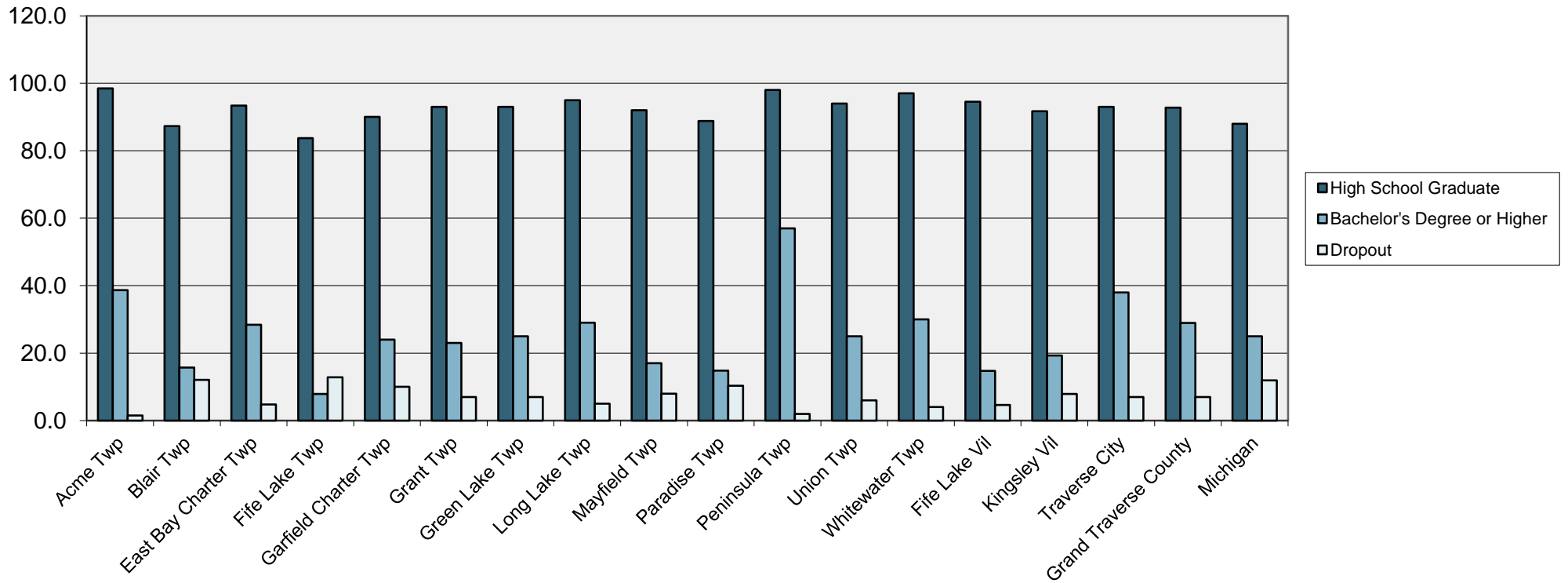
EDUCATION	Educational Attainment (%)			Enrollment (%)									
	High School Graduate	Bachelor's Degree or Higher	Dropout	Total	Nursery School to Kindergarten	Elementary to High School	College						
Acme Twp	98.5	38.7	1.5	0.6	0.0	0.4	1.7						
Blair Twp	87.3	15.7	12.1	1.0	0.1	1.2	2.4						
East Bay Charter Twp	93.4	28.4	4.8	0.7	0.0	0.4	1.5						
Fife Lake Twp	83.7	7.9	12.8	0.4	0.0	0.0	1.1						
Garfield Charter Twp	90.0	24.0	10.0	1.1	0.0	0.7	2.4						
Grant Twp	93.0	23.0	7.0	0.1	0.0	0.2	1.1						
Green Lake Twp	93.0	25.0	7.0	0.6	0.1	0.2	1.7						
Long Lake Twp	95.0	29.0	5.0	0.5	0.0	0.5	1.3						
Mayfield Twp	92.0	17.0	8.0	0.3	0.2	0.0	1.0						
Paradise Twp	88.8	14.8	10.3	0.1	0.1	0.1	1.4						
Peninsula Twp	98.0	57.0	2.0	0.9	0.0	1.2	0.7						
Union Twp	94.0	25.0	6.0	0.5	0.3	0.0	0.7						
Whitewater Twp	97.0	30.0	4.0	0.5	0.0	0.7	1.2						
Fife Lake Vil	94.5	14.7	4.6	0.0	0.0	0.0	2.0						
Kingsley Vil	91.7	19.3	7.9	0.1	0.2	0.1	2.2						
Traverse City	93.0	38.0	7.0	0.7	0.0	0.5	1.9						
Grand Traverse County	92.8	28.9	7.0	0.7	0.5	0.6	1.7						
Michigan	88.0	25.0	11.9	2.4	0.0	1.5	2.3						

2010 Educational Attainment for Grand Traverse County and Local Units



Source: U.S. Census Bureau.

2010 Educational Attainment for Grand Traverse County and Local Units



2010 Income for Grand Traverse County and Local Units



Source: U.S. Census Bureau.

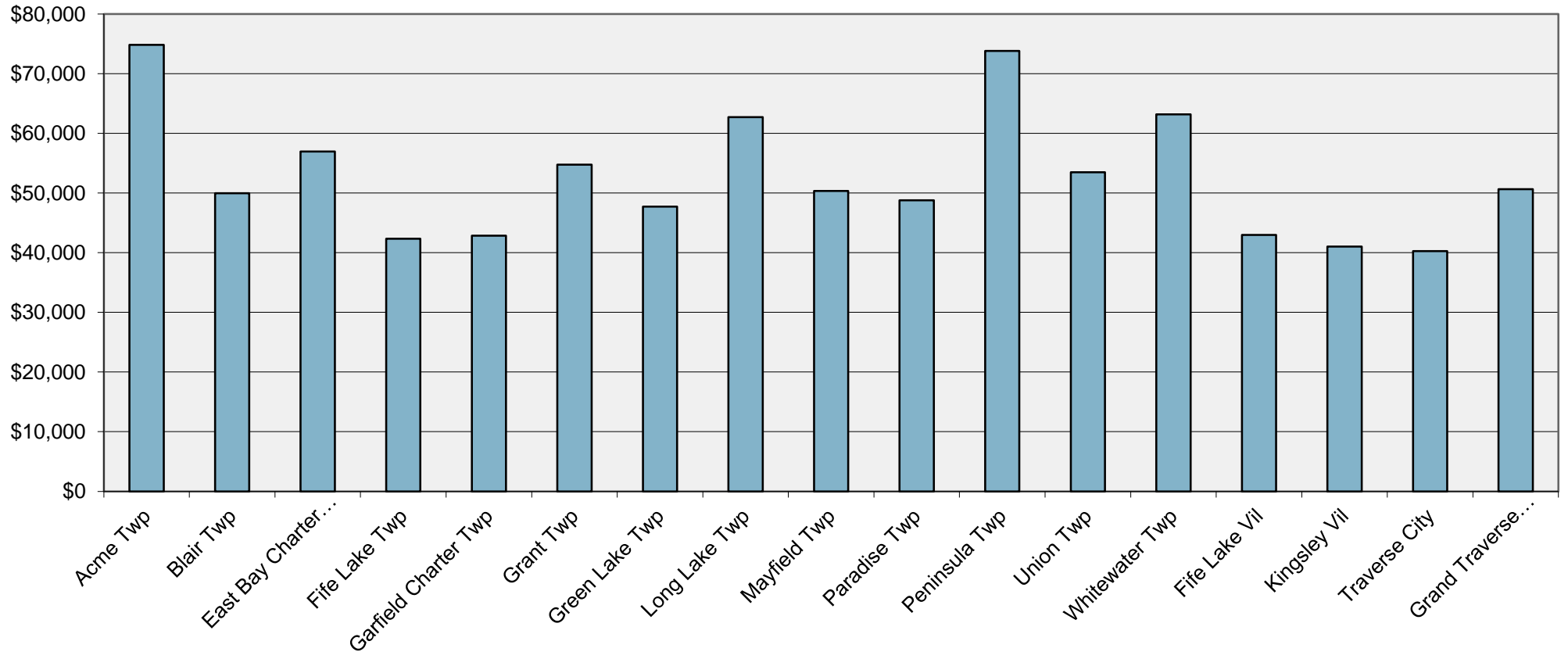
	Median Household Income	People in Poverty (%)			Per Capita Income	Median Family Income							
		Total	Under 18 Yrs Old	65 Yrs and Over									
INCOME													
Acme Twp	\$74,827	3.0	1.4	3.6	\$37,997	\$88,796							
Blair Twp	\$49,966	8.2	6.7	0.7	\$21,461	\$51,995							
East Bay Charter Twp	\$56,936	7.9	7.6	8.5	\$25,438	\$59,918							
Fife Lake Twp	\$42,344	12.4	21.0	6.6	\$13,993	\$46,818							
Garfield Charter Twp	\$42,856	10.0	5.0	8.0	\$24,750	\$55,000							
Grant Twp	\$54,750	2.0	0.5	3.0	\$23,670	\$49,808							
Green Lake Twp	\$47,716	7.0	10.0	1.0	\$22,711	\$53,184							
Long Lake Twp	\$62,722	4.0	3.0	5.0	\$27,070	\$72,804							
Mayfield Twp	\$50,344	15.0	22.0	2.0	\$19,209	\$51,413							
Paradise Twp	\$48,800	16.1	27.5	18.0	\$16,928	\$52,072							
Peninsula Twp	\$73,824	5.0	8.0	2.0	\$52,081	\$90,925							
Union Twp	\$53,472	9.0	15.0	0.5	\$24,933	\$63,333							
Whitewater Twp	\$63,173	3.0	3.0	4.0	\$34,148	\$70,298							
Fife Lake Vil	\$42,981	5.9	4.4	4.5	\$22,766	\$45,625							
Kingsley Vil	\$41,010	16.9	20.3	10.4	\$17,925	\$55,556							
Traverse City	\$40,256	14.0	18.0	7.0	\$28,479	\$61,620							
Grand Traverse County	\$50,647	9.7	11.0	6.0	\$27,091	\$61,780							
Michigan	\$48,432	14.8	20.5	8.3	\$25,135	\$46,846							

2010 Income for Grand Traverse County and Local Units



Source: U.S. Census Bureau.

2010 Median Household Income



1990 - 2012 Grand Traverse County Employment



Source: Michigan Department of Technology, Management and Budget

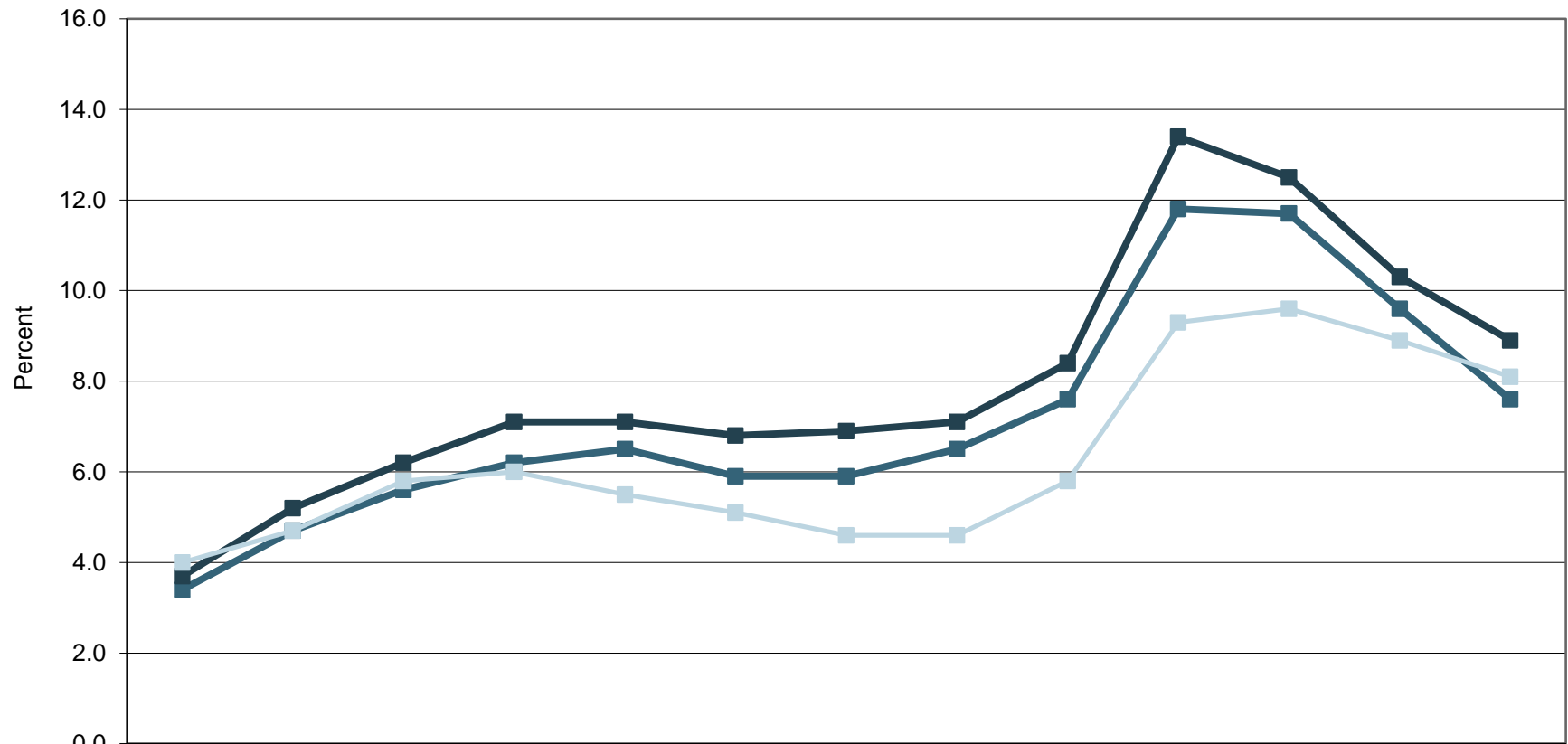
	Grand Traverse County				Michigan				United States			
	Total Labor Force	Employed	Unemployed	Percent Unemployed	Total Labor Force	Employed	Unemployed	Percent Unemployed	Total Labor Force	Employed	Unemployed	Percent Unemployed
EMPLOYMENT												
1990	36,055	33,601	2,454	6.8	4,620,000	4,262,000	358,000	7.0				5.6
1991	36,176	33,296	2,880	8.0	4,589,000	4,162,000	427,000	9.3				6.8
1992	38,326	35,130	3,196	8.3	4,662,000	4,235,000	427,000	9.2				7.5
1993	39,848	37,326	2,522	6.3	4,712,000	4,365,000	347,000	7.4				6.9
1994	41,390	39,031	2,359	5.7	4,804,000	4,509,000	296,000	6.2				6.1
1995	41,838	39,472	2,366	5.7	4,835,000	4,577,000	258,000	5.3				5.6
1996	42,733	40,802	1,931	4.5	4,888,000	4,647,000	241,000	4.9				5.4
1997	44,497	42,769	1,728	3.9	4,963,000	4,749,000	214,000	4.3				4.9
1998	44,804	43,274	1,530	3.4	5,008,000	4,810,000	198,000	4.0				4.5
1999	45,428	43,941	1,487	3.3	5,089,000	4,897,000	192,000	3.8				4.2
2000	45,549	43,997	1,552	3.4	5,144,000	4,953,000	190,000	3.7				4.0
2001	45,792	43,658	2,134	4.7	5,144,000	4,876,000	268,000	5.2				4.7
2002	45,577	43,020	2,557	5.6	5,040,000	4,725,000	315,000	6.2				5.8
2003	46,612	43,717	2,895	6.2	5,033,000	4,676,000	358,000	7.1				6.0
2004	47,418	44,338	3,080	6.5	5,043,000	4,687,000	356,000	7.1				5.5
2005	48,339	45,495	2,844	5.9	5,065,000	4,718,000	347,000	6.8				5.1
2006	49,224	46,299	2,925	5.9	5,068,000	4,719,000	350,000	6.9				4.6
2007	49,286	46,084	3,202	6.5	5,024,000	4,667,000	357,000	7.1				4.6
2008	48,734	45,010	3,724	7.6	4,936,000	4,519,000	416,000	8.4				5.8
2009	48,330	42,608	5,722	11.8	4,851,000	4,200,000	651,000	13.4				9.3
2010	47,273	41,727	5,546	11.7	4,747,000	4,147,000	601,000	12.5				9.6
2011	45,830	41,442	4,388	9.6	4,658,000	4,178,000	480,000	10.3				8.9
2012	45,712	42,090	3,570	7.6	4,657,000	4,232,000	426,000	8.9				8.1

1990 - 2012 Grand Traverse County Employment



Source: Michigan Department of Technology, Management and Budget

2000 - 2012 Unemployment Rates



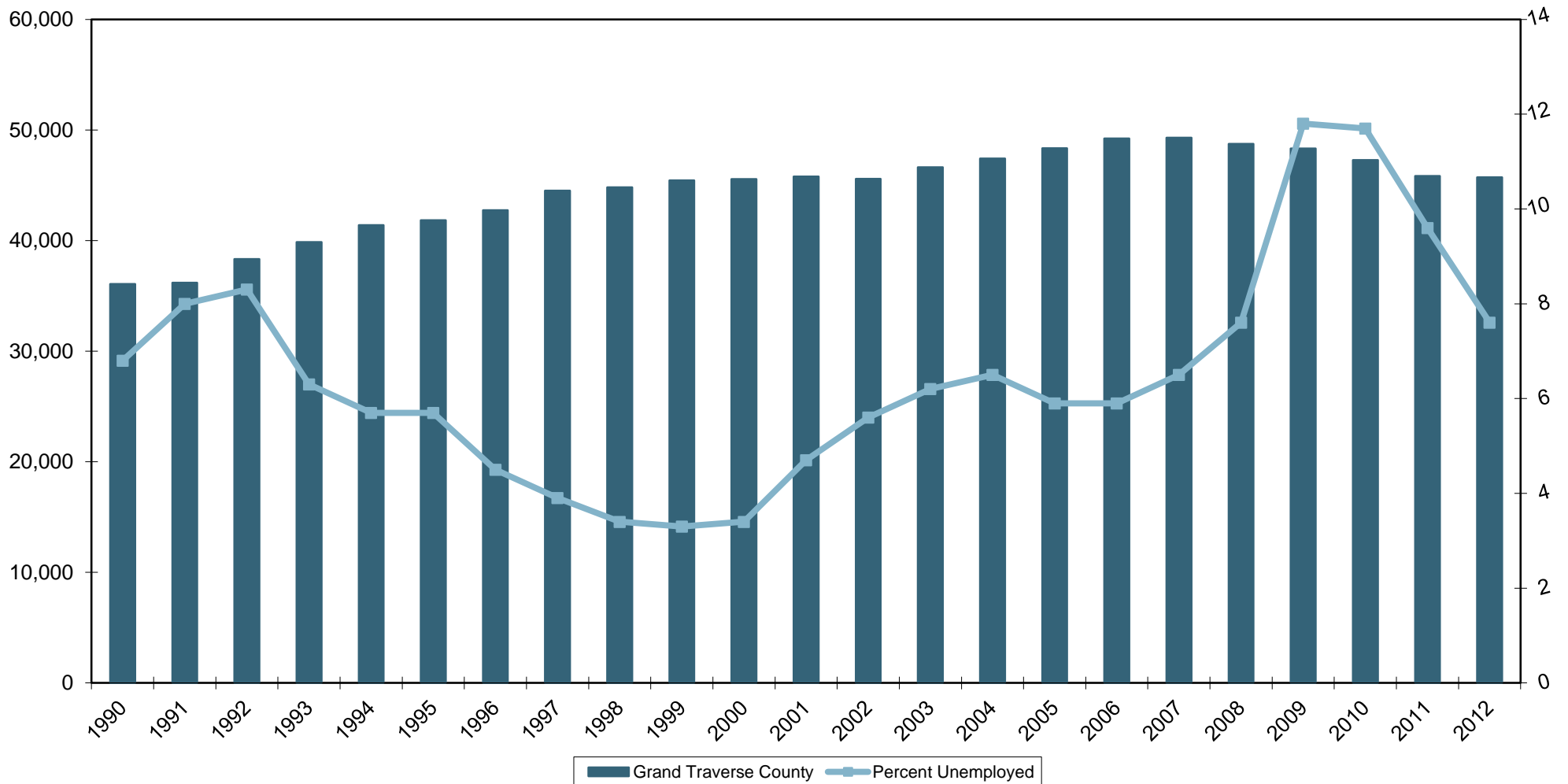
	2000	2001	2002	2003	2004	2005	2006	2007	2008	2009	2010	2011	2012
Grand Traverse County	3.4	4.7	5.6	6.2	6.5	5.9	5.9	6.5	7.6	11.8	11.7	9.6	7.6
Michigan	3.7	5.2	6.2	7.1	7.1	6.8	6.9	7.1	8.4	13.4	12.5	10.3	8.9
United States	4.0	4.7	5.8	6.0	5.5	5.1	4.6	4.6	5.8	9.3	9.6	8.9	8.1

1990 - 2012 Grand Traverse County Employment



Source: Michigan Department of Technology, Management and Budget

1990 - 2012 Grand Traverse County Labor Force and Unemployment Rates



2010 - 2012 Grand Traverse County Employment



Source: Michigan Department of Technology, Management and Budget

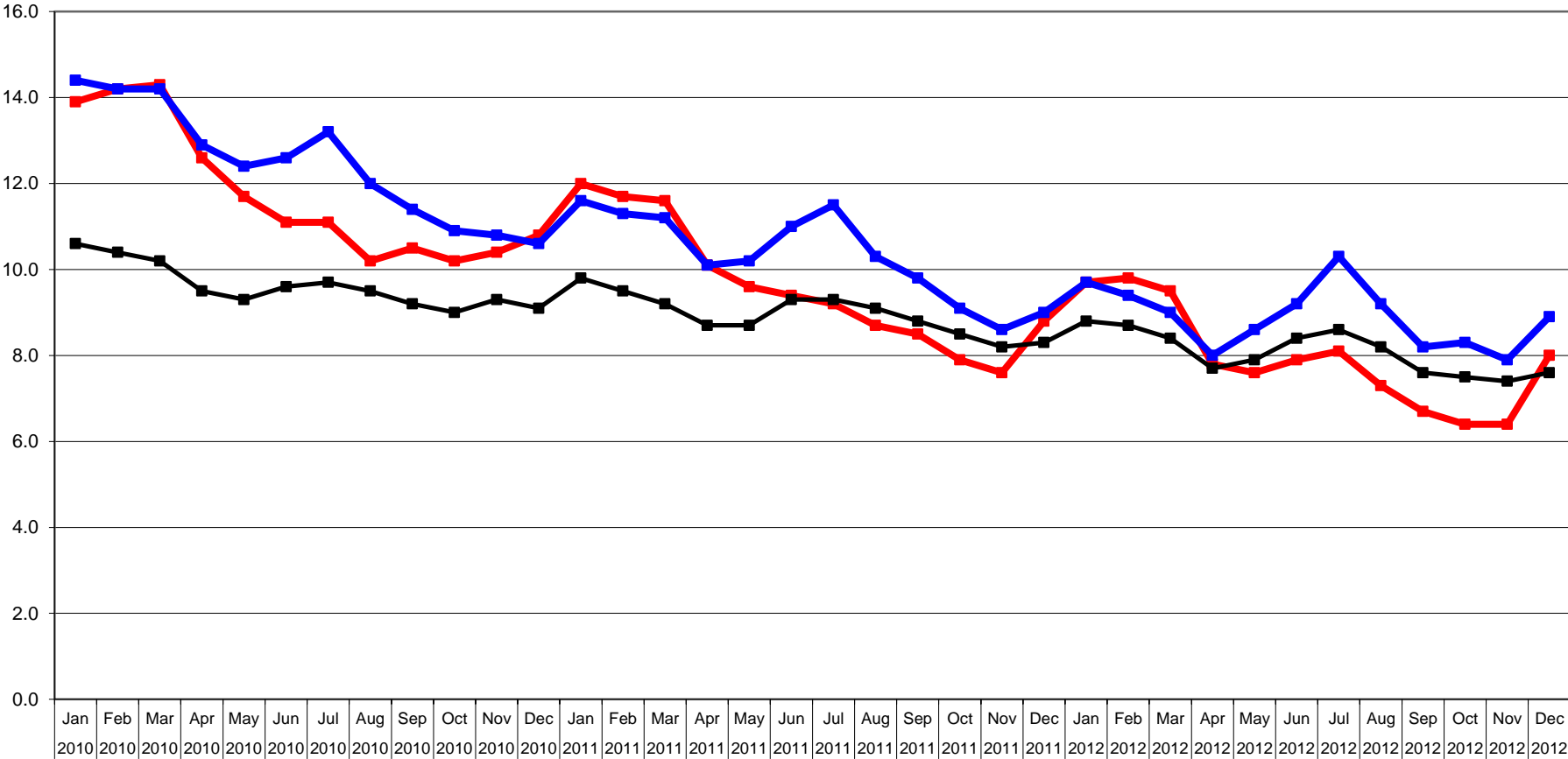
		Grand Traverse County				State of Michigan	United States
		Total Labor Force	Employed	Unemployed	Percent Unemployed	Percent Unemployed	Percent Unemployed
EMPLOYMENT							
2010	Jan	46,161	39,748	6,413	13.9	14.4	10.6
2010	Feb	46,116	39,563	6,553	14.2	14.2	10.4
2010	Mar	46,272	39,650	6,622	14.3	14.2	10.2
2010	Apr	46,064	40,257	5,807	12.6	12.9	9.5
2010	May	47,684	42,115	5,569	11.7	12.4	9.3
2010	Jun	49,568	44,046	5,522	11.1	12.6	9.6
2010	Jul	50,759	45,117	5,642	11.1	13.2	9.7
2010	Aug	49,339	44,321	5,018	10.2	12.0	9.5
2010	Sep	47,753	42,734	5,019	10.5	11.4	9.2
2010	Oct	46,353	41,634	4,719	10.2	10.9	9.0
2010	Nov	45,689	40,950	4,739	10.4	10.8	9.3
2010	Dec	45,517	40,584	4,933	10.8	10.6	9.1
2011	Jan	44,837	39,467	5,370	12.0	11.6	9.8
2011	Feb	44,601	39,366	5,235	11.7	11.3	9.5
2011	Mar	44,384	39,244	5,140	11.6	11.2	9.2
2011	Apr	44,494	39,995	4,499	10.1	10.1	8.7
2011	May	46,433	41,983	4,450	9.6	10.2	8.7
2011	Jun	48,117	43,573	4,544	9.4	11.0	9.3
2011	Jul	49,077	44,570	4,507	9.2	11.5	9.3
2011	Aug	48,101	43,928	4,173	8.7	10.3	9.1
2011	Sep	46,216	42,305	3,911	8.5	9.8	8.8
2011	Oct	45,009	41,451	3,558	7.9	9.1	8.5
2011	Nov	44,287	40,906	3,381	7.6	8.6	8.2
2011	Dec	44,402	40,512	3,890	8.8	9.0	8.3
2012	Jan	43,783	39,520	4,263	9.7	9.7	8.8
2012	Feb	43,999	39,689	4,310	9.8	9.4	8.7
2012	Mar	43,970	39,803	4,167	9.5	9.0	8.4
2012	Apr	43,890	40,467	3,423	7.8	8.0	7.7
2012	May	46,266	42,727	3,539	7.6	8.6	7.9
2012	Jun	48,321	44,497	3,824	7.9	9.2	8.4
2012	Jul	49,355	45,371	3,984	8.1	10.3	8.6
2012	Aug	48,172	44,632	3,540	7.3	9.2	8.2
2012	Sep	46,331	43,248	3,083	6.7	8.2	7.6
2012	Oct	45,559	42,651	2,908	6.4	8.3	7.5
2012	Nov	44,207	41,367	2,840	6.4	7.9	7.4
2012	Dec	44,655	42,090	3,570	8.0	8.9	7.6

2010 - 2012 Grand Traverse County Employment



Source: Michigan Department of Technology, Management and Budget

Unemployment Rate Jan/2010 - Dec/2012



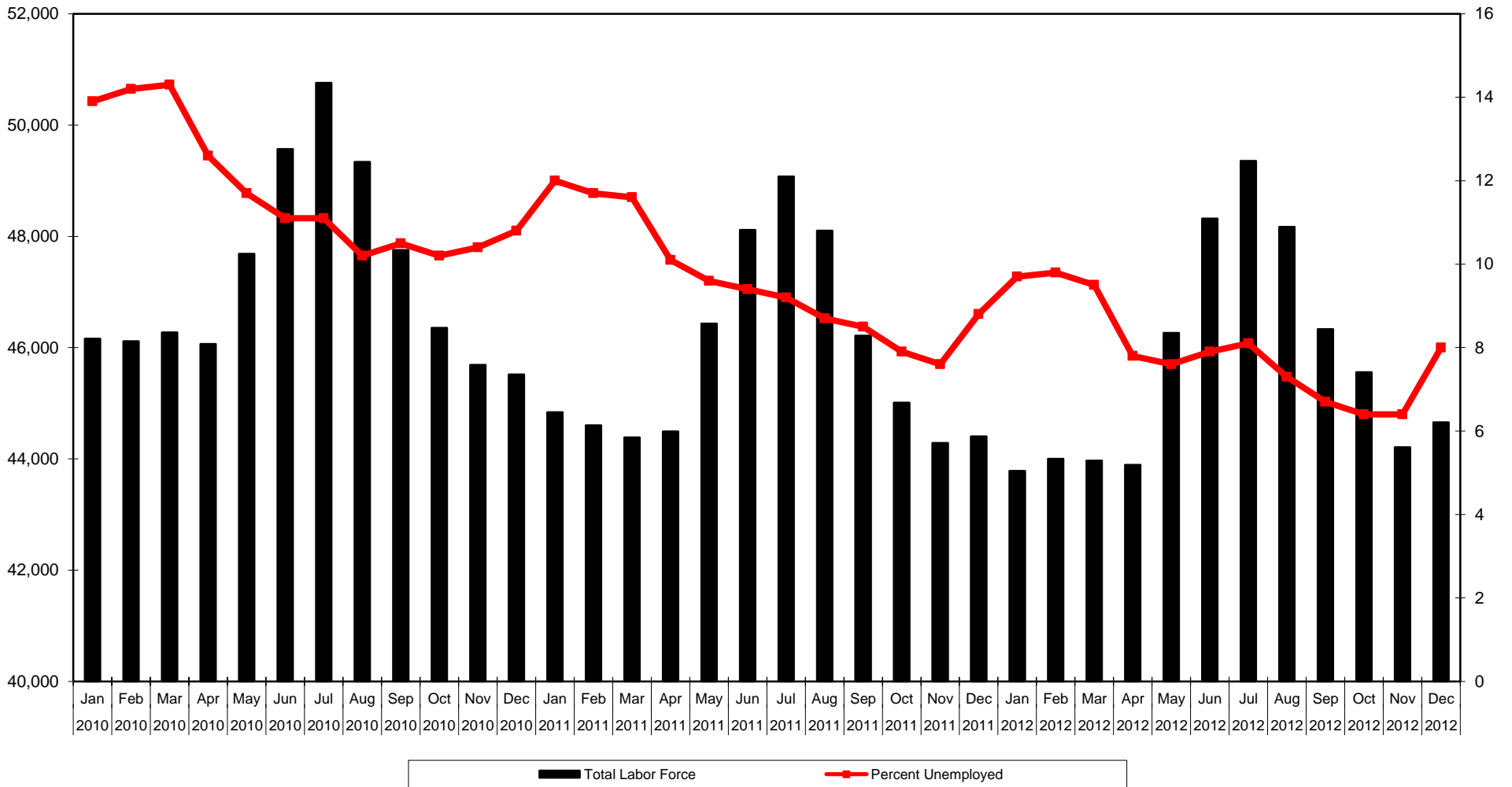
—■ Percent Unemployed
 —■ State of Michigan Percent Unemployed
 —■ United States Percent Unemployed

2010 - 2012 Grand Traverse County Employment



Source: Michigan Department of Technology, Management and Budget

Grand Traverse County Labor Force and Unemployment Rate Jan/2010 - Dec 2012



2010 Employment for Grand Traverse County and Local Units

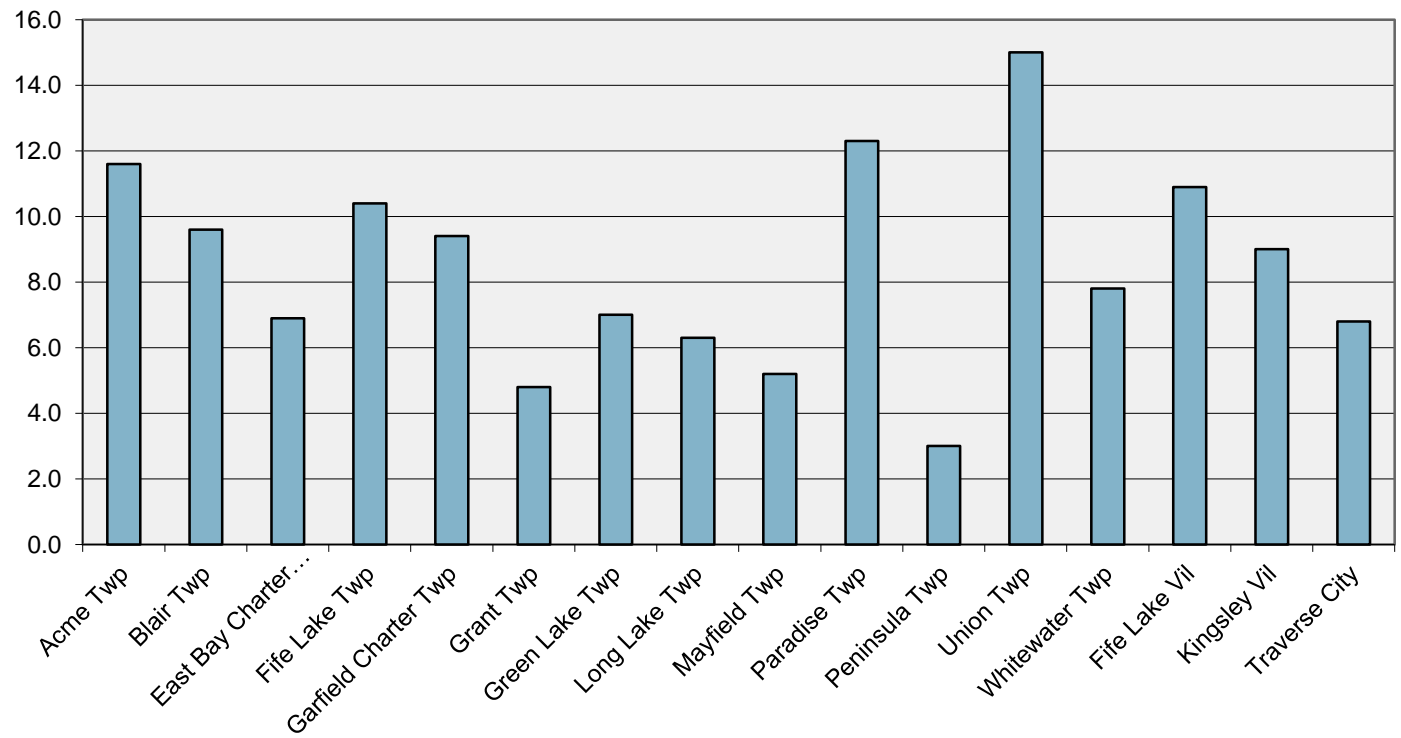


Source: U.S. Census Bureau

	Total Work Force	Percent Unemployed
--	------------------	--------------------

EMPLOYMENT		
Acme Twp	2,700	11.6
Blair Twp	4,518	9.6
East Bay Charter Twp	6,205	6.9
Fife Lake Twp	684	10.4
Garfield Charter Twp	9,112	9.4
Grant Twp	686	4.8
Green Lake Twp	2,916	7.0
Long Lake Twp	4,569	6.3
Mayfield Twp	977	5.2
Paradise Twp	2,302	12.3
Peninsula Twp	2,741	3.0
Union Twp	253	15.0
Whitewater Twp	1,428	7.8
Fife Lake Vil	193	10.9
Kingsley Vil	799	9.0
Traverse City	7,979	6.8
Grand Traverse Co	47,273	11.7
Michigan	4,944,003	11.5

2010 Unemployment Rate for Local Units



2010 Travel to Work for Grand Traverse County and Local Units



Source: U.S. Census Bureau.

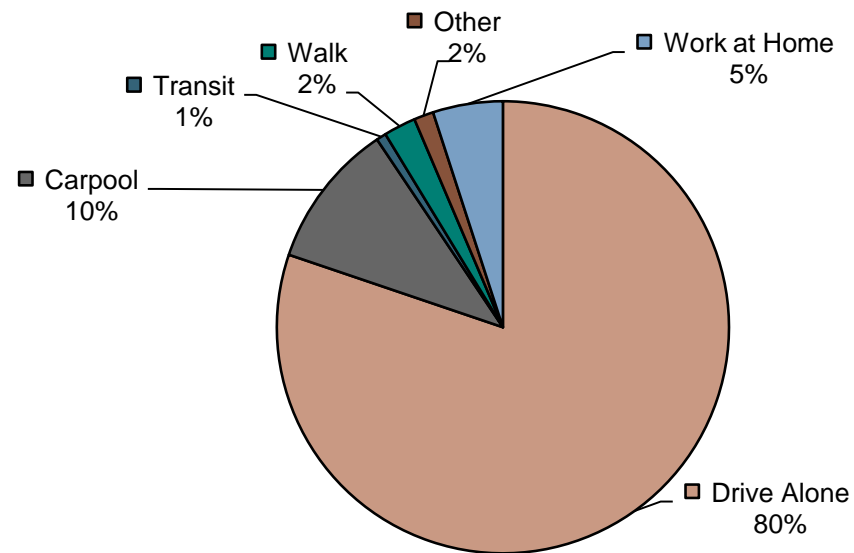
Travel to Work												
	Drive Alone	Carpool	Transit	Walk	Other	Work at Home	Commuting Time (Minutes)					
TRAVEL TO WORK												
Acme Twp	85.0	6.0	0.5	0.5	0.9	7.1	20.0					
Blair Twp	75.9	17.9	0.0	0.8	1.3	4.1	19.4					
East Bay Charter Twp	84.9	8.8	0.2	0.6	0.8	4.7	19.9					
Fife Lake Twp	84.2	10.2	1.8	2.0	0.0	1.8	30.2					
Garfield Charter Twp	81.9	9.9	1.1	1.5	0.4	5.3	15.9					
Grant Twp	70.9	16.2	0.0	1.0	0.0	11.9	28.4					
Green Lake Twp	85.2	9.7	0.3	0.5	0.4	3.9	25.3					
Long Lake Twp	85.4	10.6	0.3	1.1	0.3	2.4	20.2					
Mayfield Twp	79.5	11.2	0.0	1.7	1.4	6.1	26.8					
Paradise Twp	67.1	25.5	0.0	0.5	2.1	4.9	26.5					
Peninsula Twp	76.9	5.6	0.0	1.0	2.6	13.8	21.6					
Union Twp	83.2	13.2	0.0	0.0	0.0	3.6	26.7					
Whitewater Twp	79.2	9.8	0.0	2.1	3.6	5.3	23.0					
Fife Lake Vil	89.5	5.2	1.2	4.1	0.0	0.0	30.3					
Kingsley Vil	73.3	18.6	0.0	1.2	2.1	4.8	29.7					
Traverse City	75.8	7.0	2.3	8.2	3.5	3.2	14.5					
Grand Traverse County	80.2	10.4	0.7	2.3	1.4	5.0	19.5					
Michigan	82.9	8.9	1.3	2.3	1.1	35.0	23.7					

2010 Travel to Work for Grand Traverse County and Local Units



Source: U.S. Census Bureau.

2010 Travel to Work for Grand Traverse County and Local Units



2006-2010 Top Ten Counties Commuting to Grand Traverse County



Source: U.S. Census Bureau, 2006-2010 American Community Survey

Of the 51,558 workers in Grand Traverse County, 38,009 or 73.72% come from within Grand Traverse County.

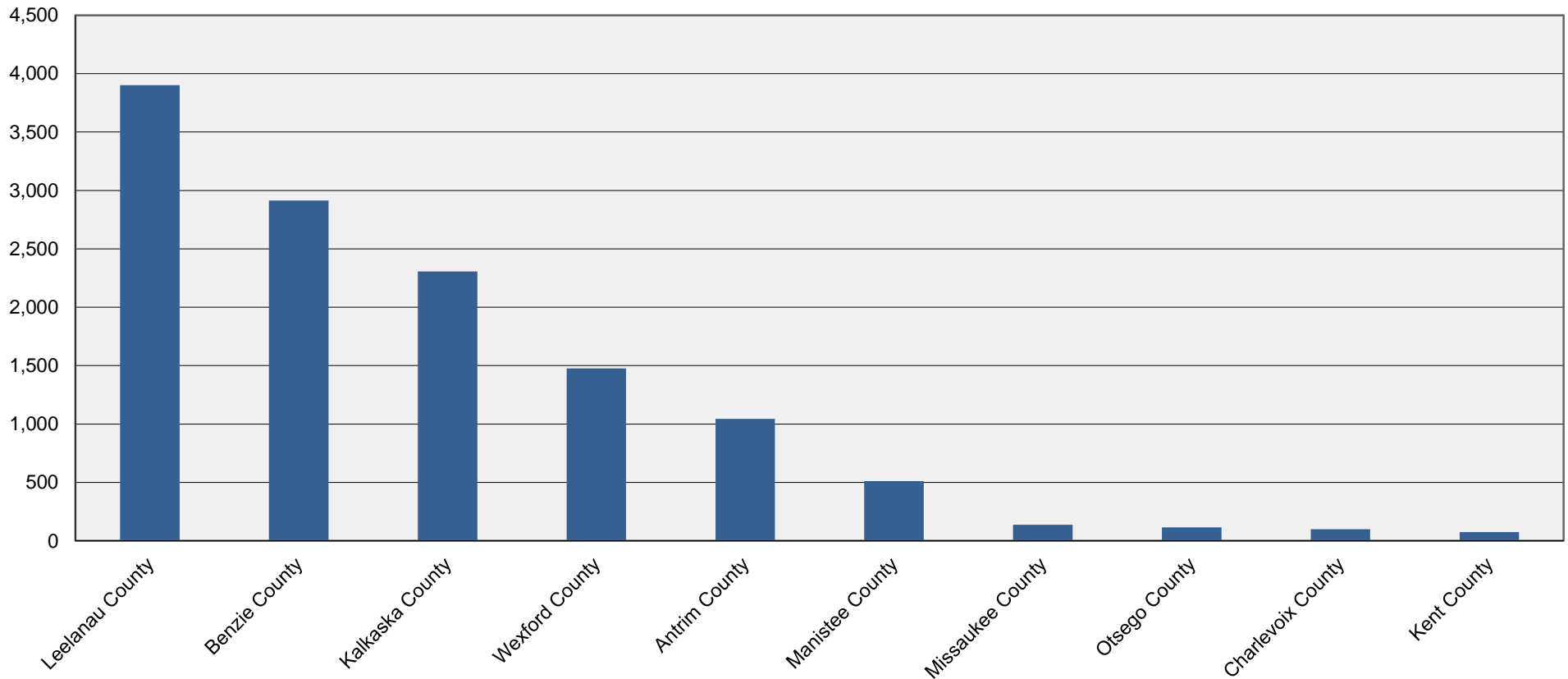
County of Residence	Residents Travelling to Grand Traverse County for Work	Percentage of Total Workers in Grand Traverse County					
WORKER FLOW							
Leelanau County	3,901	7.57%					
Benzie County	2,914	5.65%					
Kalkaska County	2,306	4.47%					
Wexford County	1,477	2.86%					
Antrim County	1,045	2.03%					
Manistee County	510	0.99%					
Missaukee County	138	0.27%					
Otsego County	115	0.22%					
Charlevoix County	99	0.19%					
Kent County	74	0.14%					
Total Workers in Grand Traverse County	51,558						

2006-2010 Top Ten Counties Commuting to Grand Traverse County



Source: U.S. Census Bureau, 2006-2010 American Community Survey

Total Number of Residents Travelling to Grand Traverse County for Work



2010 - 2040 Grand Traverse County Industry Projections



Source: U.S. Census Bureau; Projections: MDOT-Statewide & Urban Model Travel Analysis Section & University of Michigan Institute for Research on Labor, Employment, and the Economy

INDUSTRY	2010	2015	2020	2025	2030	2035	2040	2010-2040 Number Change	2010-2040 Percent Change
	Total	63,941	70,423	74,688	77,218	79,967	83,630	87,259	23,318
State government	558	576	621	649	677	711	745	187	25.1%
Local government	5,315	5,473	5,911	6,193	6,462	6,782	7,101	1,785	25.1%
Federal civilian	518	480	463	452	444	438	432	-86	-19.9%
Federal military	304	303	316	298	281	264	249	-56	-22.5%
Farm	507	487	463	436	416	403	393	-114	-28.9%
Forestry and logging; Fishing, hunting, and trapping	6	7	7	7	7	8	8	2	27.9%
Agriculture and forestry support activities; Other	321	335	349	382	411	438	461	140	30.4%
Oil and gas extraction	1,148	964	724	394	295	278	263	-886	-337.4%
Mining (except oil and gas)	0	0	0	0	0	0	0	0	0.0%
Support activities for mining	117	127	136	150	166	177	187	70	37.4%
Utilities	236	235	219	202	188	177	167	-69	-41.1%
Construction	3,732	4,617	5,097	5,243	5,404	5,616	5,814	2,082	35.8%
Wood product manufacturing	31	36	35	33	33	34	36	5	13.3%
Nonmetallic mineral product manufacturing	113	136	139	136	137	139	142	28	20.1%
Primary metal manufacturing	41	41	35	29	27	28	29	-12	-41.7%
Fabricated metal product manufacturing	587	580	537	533	548	568	590	4	0.6%
Machinery manufacturing	728	802	803	812	825	828	823	95	11.6%
Computer and electronic product manufacturing	135	126	133	131	131	131	131	-5	-3.8%
Electrical equipment and appliance manufacturing	95	107	106	101	101	101	101	6	6.4%
Motor vehicles, bodies, and trailers, parts manufacturing	748	683	590	538	509	479	475	-273	-57.4%
Other transportation equipment manufacturing	0	0	0	0	0	0	0	0	0.0%
Furniture and related product manufacturing	213	221	214	175	144	132	118	-95	-80.7%
Miscellaneous manufacturing	92	100	101	100	100	100	100	8	7.8%
Food manufacturing	1,037	1,009	977	945	918	901	881	-156	-17.7%
Beverage and tobacco product manufacturing	191	190	195	212	227	240	247	56	22.7%
Textile mills	0	0	0	0	0	0	0	0	0.0%
Textile product mills	223	178	173	177	184	193	205	-18	-8.9%
Apparel manufacturing	0	0	0	0	0	0	0	0	0.0%
Leather and allied product manufacturing	0	0	0	0	0	0	0	0	0.0%
Paper manufacturing	13	11	10	8	8	7	7	-7	-99.4%
Printing and related support activities	204	190	168	149	135	124	114	-90	-78.6%
Petroleum and coal product manufacturing	0	0	0	0	0	0	0	0	0.0%
Chemical manufacturing	122	126	126	123	122	122	122	0	-0.3%
Plastics and rubber product manufacturing	68	68	66	67	68	69	70	2	3.3%
Wholesale trade	1,358	1,434	1,442	1,441	1,432	1,435	1,432	74	5.2%
Retail trade	8,498	8,878	8,990	9,132	9,210	9,435	9,613	1,115	11.6%
Air transportation	52	55	56	58	60	62	64	12	19.2%
Rail transportation	0	0	0	0	0	0	0	0	0.0%
Water transportation	0	0	0	0	0	0	0	0	0.0%
Truck transportation; Couriers and messengers	608	658	677	717	766	823	883	275	31.2%
Transit and ground passenger transportation	51	57	59	61	64	67	71	20	28.2%
Pipeline transportation	0	0	0	0	0	0	0	0	0.0%
Scenic and sightseeing transportation; support activities	75	86	92	100	112	126	142	68	47.6%
Warehousing and storage	49	54	56	60	65	72	80	31	38.9%
Publishing industries, except Internet	275	262	262	249	238	231	224	-50	-22.4%
Motion picture, video, and sound recording industries	73	78	83	82	83	89	95	22	23.6%
Internet publishing; ISPs, search portals, and data processing	79	96	111	112	107	101	93	15	15.7%
Broadcasting, except Internet; Telecommunications	681	736	772	754	736	722	707	26	3.7%
Monetary authorities; Credit intermediation and related; Funds, trusts	967	1,033	1,056	1,057	1,053	1,051	1,041	75	7.2%
Securities, commodity contracts, investments	1,005	1,110	1,249	1,357	1,421	1,472	1,506	502	33.3%
Insurance carriers and related activities	1,113	1,217	1,257	1,258	1,255	1,253	1,239	126	10.2%
Real estate	3,589	4,290	4,619	4,770	4,896	5,062	5,237	1,647	31.5%
Rental and leasing services; Lessors of nonfinancial intangible assets	501	532	534	519	512	514	517	16	3.2%
Professional and technical services	4,303	5,409	6,189	6,652	7,199	7,880	8,627	4,323	50.1%

2010 - 2040 Grand Traverse County Industry Projections



Source: U.S. Census Bureau; Projections: MDOT-Statewide & Urban Model Travel Analysis Section & University of Michigan Institute for Research on Labor, Employment, and the Economy

INDUSTRY	2010	2015	2020	2025	2030	2035	2040	2010-2040 Number Change	2010-2040 Percent Change
	Management of companies and enterprises	89	94	93	96	100	104	108	19
Administrative and support services	2,451	2,771	2,975	3,113	3,263	3,449	3,631	1,180	32.5%
Waste management and remediation services	97	113	125	131	134	135	135	38	27.9%
Educational services	835	968	1,037	1,057	1,079	1,108	1,131	296	26.2%
Ambulatory health care services	3,716	4,474	5,337	5,897	6,441	7,078	7,716	3,999	51.8%
Hospitals	3,571	3,956	4,259	4,448	4,614	4,809	4,999	1,428	28.6%
Nursing and residential care facilities	785	917	1,020	1,130	1,236	1,358	1,480	695	47.0%
Social assistance	1,448	1,685	1,895	2,049	2,195	2,348	2,490	1,041	41.8%
Performing arts and spectator sports	443	483	496	517	549	597	655	212	32.4%
Museums, historical sites, zoos, and parks	31	37	41	45	48	52	57	25	44.9%
Amusement, gambling, and recreation	875	946	988	1,027	1,061	1,101	1,135	260	22.9%
Accommodation	1,447	1,543	1,545	1,568	1,597	1,643	1,689	242	14.3%
Food services and drinking places	4,231	4,574	4,692	4,948	5,196	5,491	5,785	1,554	26.9%
Repair and maintenance	695	741	761	791	818	853	888	194	21.8%
Personal and laundry services	884	1,049	1,182	1,246	1,302	1,374	1,445	561	38.8%
Membership associations and organizations	809	918	981	1,021	1,062	1,112	1,160	351	30.3%
Private households	855	965	1,041	1,077	1,100	1,135	1,174	319	27.2%

2010 Top Seven Counties for Tourism Spending in Michigan



Source: 2012-2017 Michigan Tourism Strategic Plan

	Annual Dollars (\$)	Percent of Total Spending (%)	2010 Population	Annual Spending Per Capita (\$)								
TOURISM SPENDING												
Wayne County	\$4,408,000,000	25.6	1,820,584	\$2,421								
Kent County	\$1,004,000,000	5.8	602,622	\$1,666								
Saginaw County	\$804,000,000	4.7	200,169	\$4,017								
Oakland County	\$716,000,000	4.2	1,202,362	\$595								
Grand Traverse County	\$693,000,000	4.0	86,986	\$7,967								
Ingham County	\$639,000,000	3.7	280,895	\$2,275								
Washtenaw County	\$595,000,000	3.5	344,791	\$1,726								

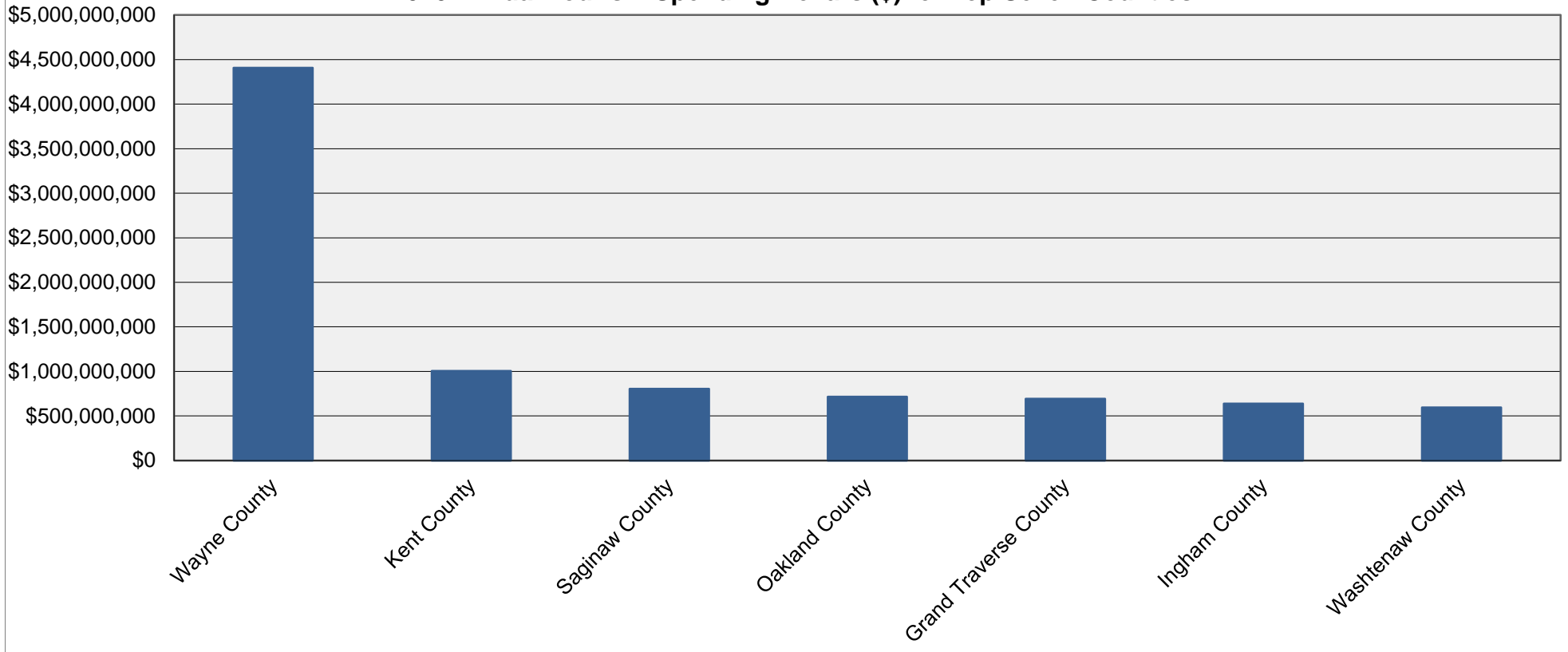
2010 Total Tourism Spending in Michigan: \$17.2 billion

2010 Top Seven Counties for Tourism Spending in Michigan



Source: 2012-2017 Michigan Tourism Strategic Plan

2010 Annual Tourism Spending Dollars (\$) for Top Seven Counties

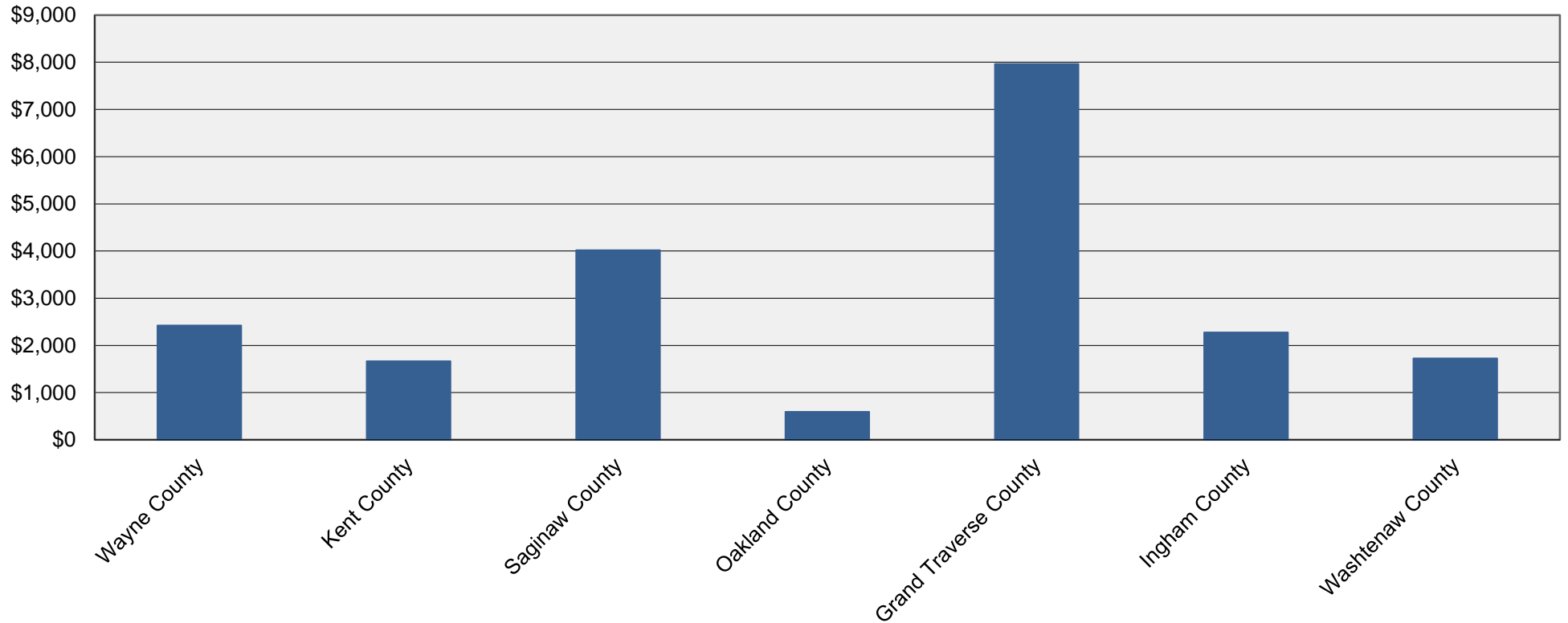


2010 Top Seven Counties for Tourism Spending in Michigan



Source: 2012-2017 Michigan Tourism Strategic Plan

2010 Annual Tourism Spending Per Capita (\$) for Top Seven Counties



2000 - 2010 Building Permits for Grand Traverse County and Local Units

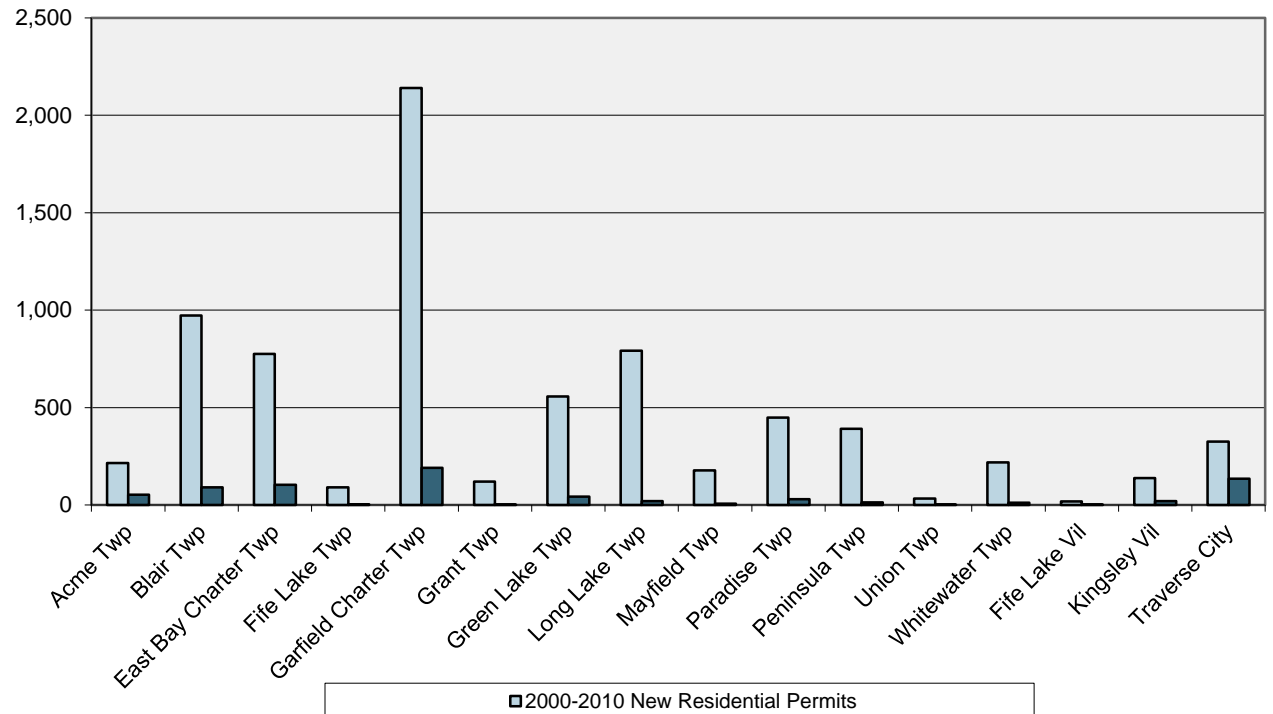


Source: Grand Traverse County Construction Code Department, Garfield Charter Township, Fife Lake Township

2000-2010 New Residential Permits	2000-2010 New Commercial Permits	2007-2010 New Residential Permits
--	---	--

BUILDING PERMITS

Acme Twp	216	53	25
Blair Twp	972	90	142
East Bay Charter Twp	775	103	95
Fife Lake Twp	90	4	9
Garfield Charter Twp	2,140	191	250
Grant Twp	120	2	16
Green Lake Twp	556	43	85
Long Lake Twp	792	19	115
Mayfield Twp	178	7	18
Paradise Twp	449	30	71
Peninsula Twp	391	13	66
Union Twp	33	1	6
Whitewater Twp	218	12	36
Fife Lake Vil	18	2	3
Kingsley Vil	138	20	18
Traverse City	326	135	77
Grand Traverse Co	7,179	698	1,018



2010 Land Use & Land Cover for Grand Traverse County and Local Units



Source: Grand Traverse County Planning & Development Department

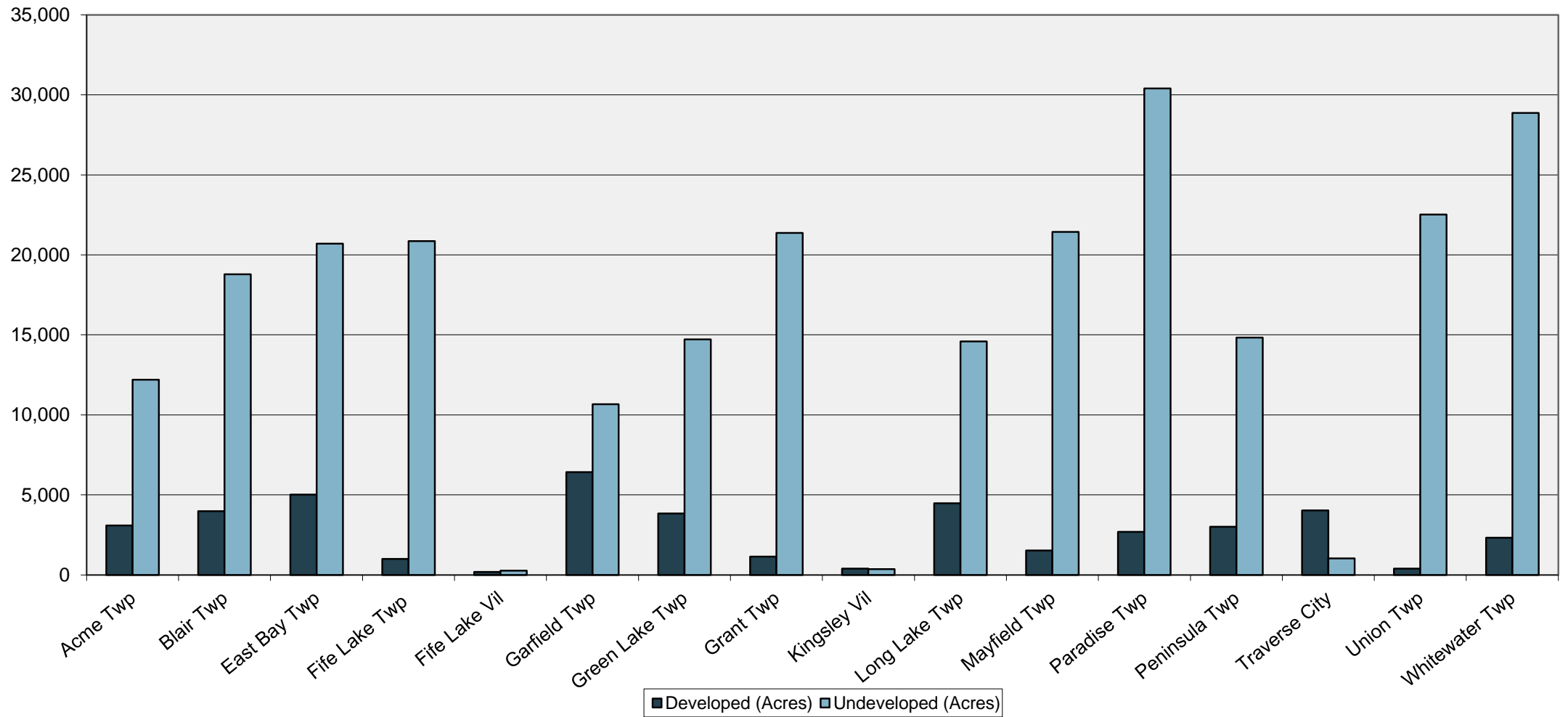
	Grand Traverse County	Acme Twp	Blair Twp	East Bay Twp	Fife Lake Twp	Fife Lake Vil	Garfield Twp	Green Lake Twp	Grant Twp	Kingsley Vil	Long Lake Twp	Mayfield Twp	Paradise Twp	Peninsula Twp	Traverse City	Union Twp	Whitewater Twp
LAND USE/LAND COVER (ACRES)																	
Residential	33,265	1,876	3,177	4,011	811	139	3,823	3,013	1,130	254	4,195	1,462	2,342	2,876	1,859	368	1,929
Single Family/Duplex Residential	32,246	1,795	3,138	3,840	809	139	3,341	3,011	1,130	210	4,156	1,456	2,342	2,870	1,712	368	1,929
Multiple Family Residential (Low Rise)	522	35	0	102	2	0	213	0	0	3	26	6	0	6	130	0	0
Multiple Family Residential (Med/Hi Rise)	23	0	0	7	0	0	1	0	0	0	0	0	0	0	14	0	0
Manufactured Home Park	436	46	39	40	0	0	255	2	0	41	13	0	0	0	1	0	0
Group/Transient Quarters	38	0	0	22	0	0	13	0	0	0	0	0	0	0	2	0	0
Institutional	1,589	41	53	163	49	11	409	204	1	76	59	15	37	23	418	2	29
Recreation	3,025	772	199	491	37	22	470	295	11	29	71	25	213	55	284	13	38
Indoor Cultural/Assembly/Recreation	38	0	1	0	0	3	3	2	0	0	7	0	0	0	22	0	0
Open Land Recreation	2,987	772	198	491	37	19	467	293	11	29	64	25	213	55	262	13	38
Commercial	3,440	310	492	205	33	14	1,216	224	10	41	141	21	46	43	498	15	130
Industrial	901	33	33	51	6	0	451	28	0	0	0	0	0	17	240	0	41
Transportation/Communication/Utilities	1,347	60	22	101	59	2	58	75	1	3	7	1	52	4	741	4	155
Agricultural	46,805	3,960	2,775	2,132	2,452	0	2,060	551	5,947	97	2,108	9,224	5,584	6,529	0	230	3,154
Cropland	36,358	2,142	2,511	1,619	2,452	0	1,496	509	5,867	97	1,760	9,172	5,369	1,865	0	170	1,328
Orchards/Vineyards	9,007	1,632	230	502	0	0	95	4	0	0	161	0	0	4,591	0	0	1,792
Confined Feeding Operations	35	0	8	0	0	0	10	0	6	0	0	4	7	0	0	0	0
Permanent Pasture Lands	1,139	115	0	0	0	0	355	31	68	0	177	45	208	44	0	60	34
Other Agricultural Lands	267	71	26	11	0	0	104	7	6	0	10	3	0	29	0	0	0
Grass/Shrublands	32,241	2,151	2,868	2,290	1,075	29	2,927	1,749	2,224	55	2,698	2,368	3,907	1,796	175	2,547	3,383
Forest	133,966	3,708	8,068	13,335	15,158	197	3,576	7,388	11,750	131	8,060	6,851	15,781	5,598	427	15,356	18,584
Broadleaved Forest	55,204	1,248	4,907	4,663	4,574	55	1,761	2,519	7,639	69	4,011	4,345	5,958	3,590	293	2,702	6,870
Coniferous Forest	55,281	1,553	2,742	6,880	8,779	93	1,074	2,597	2,155	60	3,275	2,179	7,548	976	69	7,294	8,008
Mixed Conifer/Broadleaved Forest	23,481	907	419	1,792	1,805	49	741	2,272	1,956	2	774	327	2,275	1,032	65	5,360	3,706
Wetlands	39,037	2,288	4,784	2,827	2,181	37	1,873	5,008	1,304	80	1,706	2,788	5,071	746	428	4,334	3,583
Wooded Wetlands	33,190	1,667	4,667	2,519	1,372	8	1,742	4,570	1,022	74	1,372	2,255	4,154	618	264	3,713	3,173
Non-Wooded Wetlands	5,847	621	117	308	809	29	131	438	282	6	334	533	917	128	164	621	410
Barren	1,568	90	288	121	0	7	235	28	140	2	15	209	61	155	2	53	164
Beach/Riverbank	355	76	6	52	0	1	37	0	22	0	0	6	0	147	2	0	7
Sand Dune/Exposed Bluff	216	0	0	26	0	0	36	0	7	1	0	0	18	0	0	15	114
Extractive	996	14	282	43	0	6	162	28	111	1	15	203	43	8	0	38	43
Water	17,336	233	297	1,703	912	15	701	4,732	479	2	3,827	116	94	50	229	192	3,752
TOTAL	314,700	15,523	23,056	27,430	22,773	473	17,799	23,295	22,997	770	22,887	23,080	33,188	17,892	5,301	23,114	34,942
Developed (Acres)	43,567	3,093	3,977	5,022	995	188	6,428	3,839	1,153	402	4,473	1,524	2,691	3,018	4,040	402	2,323
Undeveloped (Acres)	253,617	12,197	18,783	20,705	20,866	270	10,671	14,724	21,365	365	14,587	21,440	30,404	14,824	1,032	22,520	28,868
Percent Developed (Acres)	17.2%	25.4%	21.2%	24.3%	4.8%	69.9%	60.2%	26.1%	5.4%	110.4%	30.7%	7.1%	8.8%	20.4%	391.6%	1.8%	8.0%

2010 Land Use & Land Cover for Grand Traverse County and Local Units



Source: Grand Traverse County Planning & Development Department

2010 Developed and Undeveloped Land



Grand Traverse County Agricultural Land, Farms and Sales



Source: USDA, National Agricultural Statistics Service; Grand Traverse County Planning & Development Department

	1997	2002	2007	Change from 1997 to 2007													
FARMS AND SALES																	
Total Number of Farms	485	489	522	37													
Average Acreage of Farms	138	127	120	-18													
Total Sales of Agriculture Products	\$18,791,000	\$11,366,000	\$19,244,000	\$453,000													
Average Sales Per Farm	\$38,744	\$23,243	\$36,865	\$1,879													
	Grand Traverse Co	Acme Twp	Blair Twp	East Bay Twp	Fife Lake Twp	Fife Lake Vil	Garfield Twp	Green Lake Twp	Grant Twp	Kingsley Vil	Long Lake Twp	Mayfield Twp	Paradise Twp	Peninsula Twp	Traverse City	Union Twp	Whitewater Twp
AGRICULTURAL LAND CLASSIFICATIONS (ACRES)																	
Total Agricultural Land	46,805	3,960	2,775	2,132	2,452	0	2,060	551	5,947	97	2,108	9,224	5,584	6,529	0	230	3,154
Cropland	36,358	2,142	2,511	1,619	2,452	0	1,496	509	5,867	97	1,760	9,172	5,369	1,865	0	170	1,328
Orchards/Vineyards	9,007	1,632	230	502	0	0	95	4	0	0	161	0	0	4,591	0	0	1,792
Confined Feeding Operations	35	0	8	0	0	0	10	0	6	0	0	4	7	0	0	0	0
Permanent Pasture Lands	1,139	115	0	0	0	0	355	31	68	0	177	45	208	44	0	60	34
Other Agricultural Lands	267	71	26	11	0	0	104	7	6	0	10	3	0	29	0	0	0

Grand Traverse County Agricultural Land, Farms and Sales



Source: USDA, National Agricultural Statistics Service; Grand Traverse County Planning & Development Department

2010 Grand Traverse County Agricultural Land Classifications

